



TAX SYSTEMS



Alphatax Ireland Release Notes

Version 18.1



Contents

1. Introduction	3
About version 18.1	3
Share your ideas	3
Technical support	3
2. Important notices.....	4
Notification of planned changes for next release.....	4
Size of generated PDF files	4
3. Installation.....	5
Installation key	5
Downloading and installing Alphatax	5
Templates	5
Alphatax platform support	6
4. Enhancement and fixes	7
Displaying prior year values and percentage changes	7
5. Miscellaneous changes	8
Roll forward of iXBRL flags	8
Repayable R&D tax credits.....	8
Rental income sources statement	9
6. System changes.....	10
Product news	10
Enhanced integration with Data Extraction	10
Password protection.....	10
Navigation history	10
Improved search capabilities	11
Miscellaneous system changes	11
7. Appendix 1: Configuration option changes	12
Ini file changes	12

1. Introduction

About version 18.1

Welcome to the version 18.1 edition of Alphatax Ireland. This release includes a number of new features and enhancements including:

- Prior year values and percentage changes between periods may now be displayed in the 'Trade summary', 'Profits chargeable' and 'Corporation tax' statements
- The selected iXBRL flags will now roll forward from one period to the next, but may still be amended
- A new Product News feature which allows you to see important updates at a glance
- A new Navigation History pane which allows you to quickly navigate to previously selected statements
- Improved integration with Data Extraction allowing you to easily set up automatic extraction of information from your accounting systems
- Miscellaneous enhancements together with updates to resolve certain user issues

Share your ideas

We have recently introduced a new ideas portal to help us better capture customer ideas across our entire product portfolio. The portal allows you to add your own ideas, and to vote for other ideas that you think have the most merit. These ideas will feed directly into our future decisions on what we will be developing.

Please register at the following today and let us know what you'd like us to do next.

<https://taxsystems.ideas.aha.io/>

Technical support

We provide a technical support help desk for users requiring assistance. The help desk can be contacted by telephone between the hours of 9.00 am and 5.30 pm, Monday to Friday excluding public holidays.

If a consultant is not available to speak with you immediately, every effort will be made to return your call within one hour.

If you require help or further information, please contact the support team on:		
Ireland:	Tel: +353 (0) 1661 9976	Email: support@taxsystems.ie
UK:	Tel: +44(0) 1784 777 666	Email: support@taxsystems.com

*Please note: We recommend that you use the **E-mail Support** option from the **Help** to send copies of the computation directly to Support.*

2. Important notices

Notification of planned changes for next release

Merging Alphatax User and Data databases

In the next planned release of Alphatax in Q2 2019, we plan to merge the two existing Alphatax databases (User database and the Data database) into a single database. The User database will be merged **into** the Data database, which will be the only database used from that point onward and will be referred to as the Alphatax database.

Why are we doing this?

- To make the installation of Alphatax Enterprise simpler
- To reduce ongoing customer maintenance

What, if anything, do you need to consider?

- If you use any SQL reports that refer to the User database then these reports will need to be amended to reflect the fact that the user data will be stored in the Alphatax database
- If you use any other external reporting tools, such as spreadsheets, that refer to the User database then these will also need to be amended to reflect the change

When should you make changes?

- We have linked the two databases to ensure that in the 18.1 release your reports will work when run against either the Data database, or the User database.
- From 19.0 onwards (Q2 2019) the User database will no longer exist, so we suggest that you plan to amend all reports that currently refer to the User database to point at the Data database well in advance of the 19.0 release. If you do this then all reports will continue to function seamlessly following the 19.0 release.

Size of generated PDF files

In the previous release we made a change to the method that we use to generate PDF versions of the tax return supported in Alphatax. The aim of this change was to materially improve the quality of the output, and to make it quicker for us to update our software following changes to these returns.

An unintended consequence of this change was that the size of the PDF file of the computation and the tax return increased to such an extent that some users were not able to e-mail the file to their clients. As a work around, many clients who had their settings fixed to automatically create a PDF copy of the computation and the tax return turned off this configuration. This release reduces the size of the PDF and therefore users who used to have this setting can now turn it back on again in the tcsbase.ini file by ensuring that GenerateFormPdf=1 and GenerateCompPdf=1. Users with any queries should contact our support desk.

3. Installation

Installation key

Your 16-digit Alphatax installation key is provided in the email that you received announcing the release. The Alphatax installation key is required to both download and install Alphatax.

Should you have any queries, please contact the support team on 01 661 9976 or at support@taxsystems.ie.

Downloading and installing Alphatax

Please download the copy of Alphatax from the releases download site <https://releases.taxcomputersystems.com>, which will require you to enter your email address and your 16-digit Alphatax installation key. This process will generate an automated email with a unique URL which will be sent to your email address.

The URL will allow you to download the Alphatax installer along with other applications which you are registered to use and also installation guides and release notes.

Click on '**Alphatax v18.1.exe**' to initiate the installation process for which the Alphatax installation key will again be required. Press the **Enter** key at the prompts. The installation process will override the old version of Alphatax. For detailed information on the installation process refer to the *IE_Alphatax_V18.1_Installation_Guide*. This can be retrieved from the user documentation section of the download screen.

Enterprise users should also run the database update script from within the Enterprise Manager utility. The database version is now 38. The Enterprise Manager is automatically extracted from within the Alphatax Installer package.

Templates

The installation will reinstall the standard Alphatax templates to ensure that you have the latest version.

To allow you to retrieve your own versions of these templates, if applicable, the old templates are stored in a new folder called BACKUPXn (where n is a number incremented for each new installation).

Please note: This part of the process may take some time. A progress bar displays the names of templates as they are being copied.

Folders called BACKUPXn created in the version 18.0 release are removed with this release.

Alphatax platform support

Operating Systems

Alphatax is supported on Windows 7 and later operating systems.

SQL Server

Alphatax Enterprise is supported on SQL Server 2008 and later versions

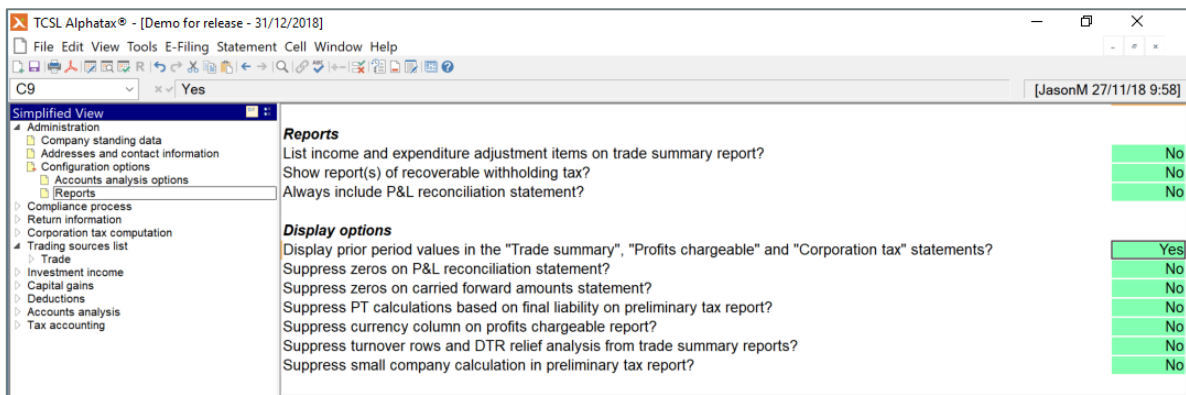
4. Enhancement and fixes

Displaying prior year values and percentage changes

Following user feedback, we have introduced a feature that allows the user to display prior year values and the percentage change between the current year and the prior year values on selected statements. The statements which include this option are the "Trade summary", "Profits chargeable" and "Corporation tax" statements in report mode.

Activating the feature

To turn this feature on, within the 'Reports' statement the option 'Display prior period values in the "Trade summary", "Profits chargeable" and "Corporation tax" statements' should be flagged as 'Yes'.



Once you have turned the feature on, two new columns will display in the relevant statements. The 'Prior period' column will display the prior period values in relation to that line item. The 'Increase/(decrease)' will display the relevant percentage change as either a plus or minus value in relation to that line item.

The screenshot shows a 'Trade summary' report in TCSL Alphatax. The report includes columns for 'Prior period' and 'Increase/(decrease)'. The data is as follows:

		€	€	Prior period	Increase/(decrease)
				€	
Profit per accounts	F1	3,124,000	3,000,000	4.13%	
Add					
Pension expensed	C2	133,000	100,000	33.00%	
Charges on income per accounts	E1	4,000	3,000	33.33%	
Subscriptions and donations		6,000	-	N/A	
Entertainment expenses		2,000	20,000	-90.00%	
Disallowable legal and professional expenses		15,000	30,000	-50.00%	
		160,000	153,000	4.58%	
Deduct					
Pension deduction	C2	(158,000)	(150,000)	5.33%	
Capital allowances	C3	(125,000)	(30,822)	305.55%	
Irish source interest income per accounts	D1	(59,000)	(46,000)	28.26%	
		(342,000)	(226,822)	50.78%	
Adjusted profit		2,942,000	2,926,178	0.54%	

5. Miscellaneous changes

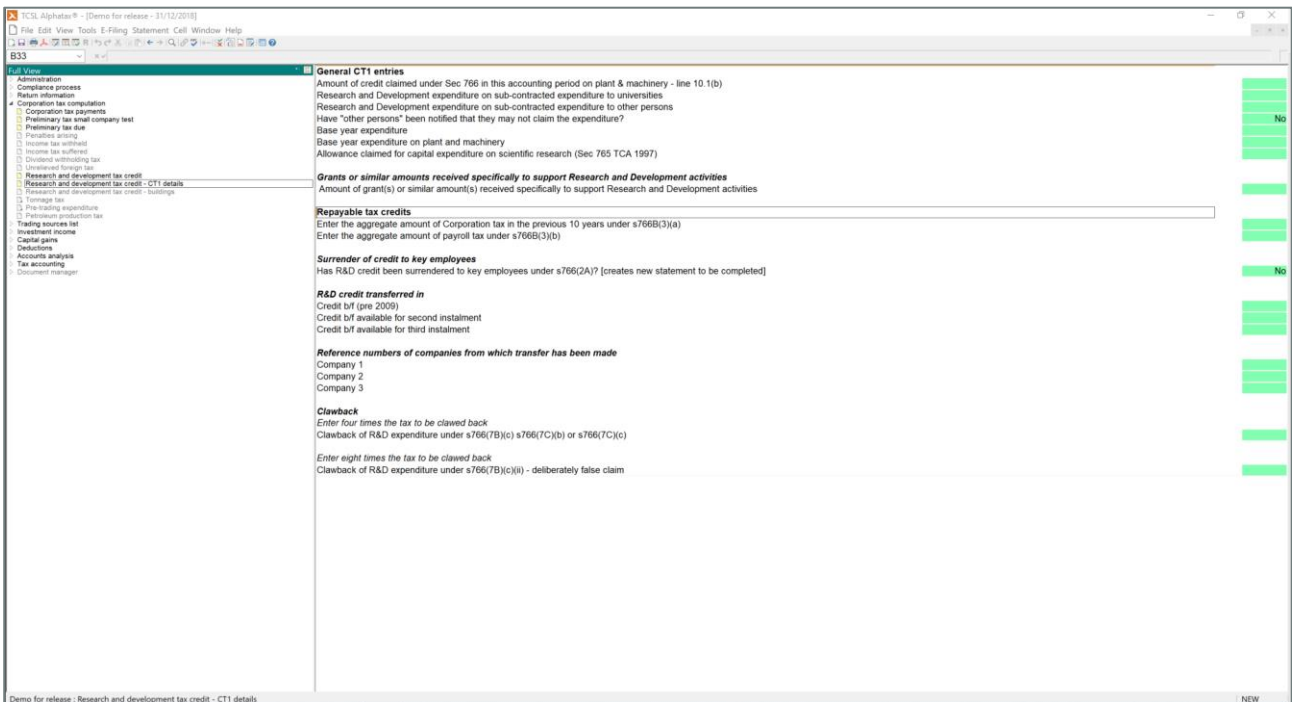
Roll forward of iXBRL flags

Once iXBRL flags have been selected in one period, these flags will then roll forward automatically to successive periods. These flags may still be amended should the iXBRL status of the company change.

Repayable R&D tax credits

The Form CT1 for 2018 introduced two new boxes related to repayable Research and Development (“R&D”) tax credits. Where a company is claiming a repayable R&D credit, the company must disclose certain values in the Form CT1 under s766B TCA 1997 to Revenue. We have introduced a diagnostic that will display in the event of a repayable credit being claimed where the aforementioned figures have not yet been input into Alphatax.

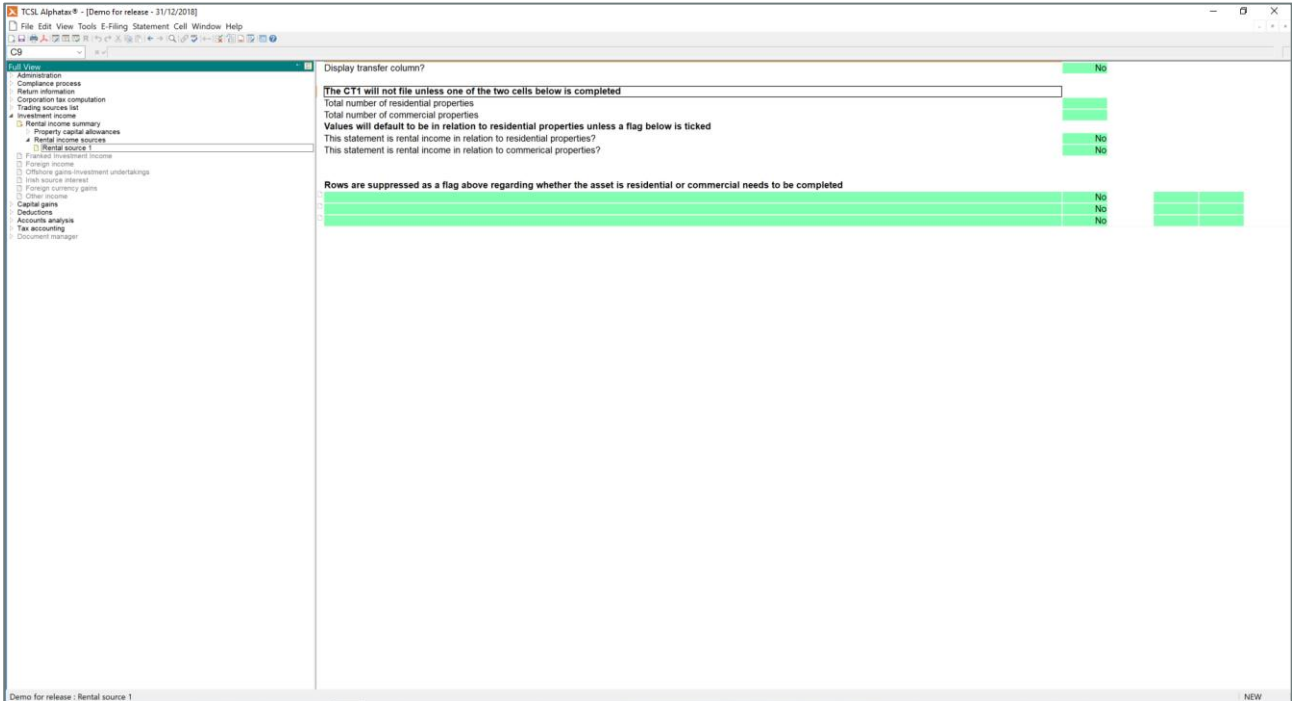
The figures should be entered in the statement “Research and development tax credit – CT1 details”, in cells contained on the rows below the heading “Repayable tax credits” as displayed below:



Rental income sources statement

Following customer feedback, we have moved the rental income input boxes that need to be completed regarding the number of properties that are residential or commercial premises. They now appear at the top of the "Rental income sources" statement once a source has been entered.


Should there be more than one rental income source, the boxes regarding the number of residential or commercial properties will only appear on the first income source entered.



6. System changes

Product news

Customers have in the past told us that they would like to be kept up to date with changes to Alphatax, so for this edition we have introduced a new Product News page. This page will be triggered when Alphatax starts up following a new release, or product announcement to ensure that all of our users are kept up to date with new developments.

You can access the latest news page at any time using the new **Product News** icon  on the toolbar menu.

Enhanced integration with Data Extraction

In this Alphatax release we have made significant improvements to the integration of Alphatax and Data Extraction, which substantially improves the process of mapping and importing data from your underlying accounting systems into Alphatax.

Please contact your Account Manager for further information.

Password protection

We have added a new option to allow users to add password protection to both:


- PDFs generated from Alphatax when using PDF Writer, and

You can set the minimum required password length via the ini file option `MinimumPasswordLength` as outlined in Appendix 1.

Please note: If you forget your password then Tax Systems cannot recover a password protected file on your behalf.

Navigation history

Following user enhancement requests, we have added a new **Navigation History** option to Alphatax. A new pane allows users to track the input and report statements that they have visited and allows them to snap back to the selected statement with a single click.

You can access the navigation history pane at any time using the new **Navigation History** icon  on the toolbar menu.

We believe that this will save a considerable amount of time navigating around the computation. We would appreciate your feedback on this feature.

Improved search capabilities

We have made a number of improvements to the Alphatax **Find** feature to make it easier to find content in both input and report mode.

- The dialog has been redesigned to make the available options both clearer and easier to select.
- You can now search for content across the entire computation using **Find All**. Clicking on one of the results will take you directly to the result you've selected.
- Results return the name of the statement, the cell reference and the date and time that the last named user made an entry, so that you can filter the results to quickly get to the result you want.
- The dialog now persists as a separate dialog so you can keep it open and perform other searches.

Miscellaneous system changes

- We have released a new and improved **Help** system that makes use of modern web technology. In time this will allow us to release new types of content natively in our Help system. Please let us know if there are any areas you would like to see additional help for.
- CCM Dashboard has been improved to give a clearer error message when no internet connection is available.

7. Appendix 1: Configuration option changes

Ini file changes

Additional tcslbase.ini file settings have been introduced for this release. Include these items in the listed section of the ini file to enable the relevant settings

Section	Setting	Options	Effect
SYSTEM	DisableProductNews	=0 (default)/1	Disables Alphatax Product News page and related menu items
SYSTEM	MinimumPasswordLength	=Numerical entry (default 0)	Specify the minimum number of characters required for passwords (Professional file protection, Email zip attachments & PDF files)
SYSTEM	DisableHTMLPanels	=0 (default)/1	Disables features provided via new html pane, currently Navigation History
PDF	UseBitmapPreview	=0 (default)/1	If the return forms are unclear in Print Preview when using a remote connection (e.g. Citrix), then set this option to 1 to resolve the issue.



TAX SYSTEMS



Alphatax® software may not be copied, photocopied, reproduced, translated, or reduced to any electronic medium or machine-readable form, in whole or in part, without the express written permission of:

Tax Computer Systems Limited

7 Herbert Street

Dublin 2

D02 K838

T: +353 (0) 1 661 9977

E: support@taxsystems.ie

W: www.taxsystems.com

Copyright © 2018 Tax Computer Systems Limited the trading subsidiary of Tax Systems plc
All rights reserved: Alphatax is a trademark of Tax Computer Systems Limited
Registered in Ireland company registration number 361507

